

Model: CITIZEN MF 700-60 WHE 1S

#### Dimensions (mm)

- combustion opening WxH: 702x602
- external WxDxH: 823x488x1098
- fresh air: 1x $\varnothing$ 100
- diameter flue:  $\varnothing$ 180

#### Technical Data

- capacity: 12.2kW
- efficiency capacity: 80%
- CO (volume with 13%O<sub>2</sub>): 0.09%
- dust (volume with 13%O<sub>2</sub>): 25mg/m<sup>3</sup>
- weight: 195kg
- air intake to convection : minimum 700cm<sup>2</sup> (4x $\varnothing$ 150)
- air exhaust from convection : minimum 700cm<sup>2</sup> (4x $\varnothing$ 150)

#### Specifications

- inside finishing: heat-resistant black paint
- vermiculite insulation plates
- convection jacket in galvanized steel
- side-hinged door with heat-resistant glass
- interior backside finishing: ORIGINAL (ribbed cast iron)
- standard door opens to the left side

#### Options

- promat insulation kit
- door opens to the right side

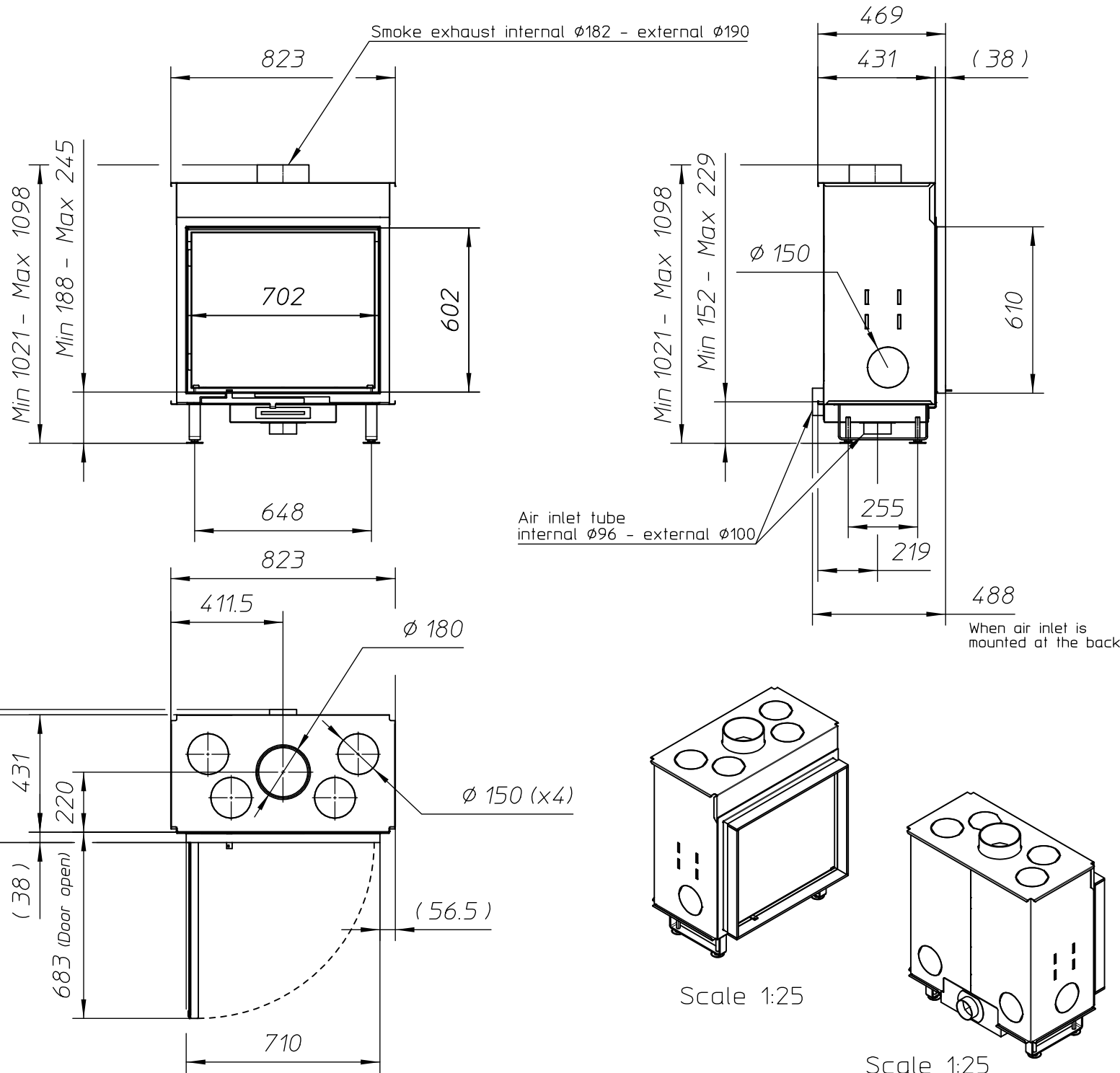
Table: prescribed insulation thickness (mm)

Combustable finishing material				
	A	B	C	D
Test report (TC = 0,14 W/mK)	NC	40	70	50
Metalfire recommended Promasil 1100L (TC = 0,081 W/mK)	NC	25	40	30
Non-combustable finishing material				
non-combustable materials (structural building items EXCLUDED e.g. load bearing walls)	0	0	0	0
TC = thermal conductivity NC = non-combustable				

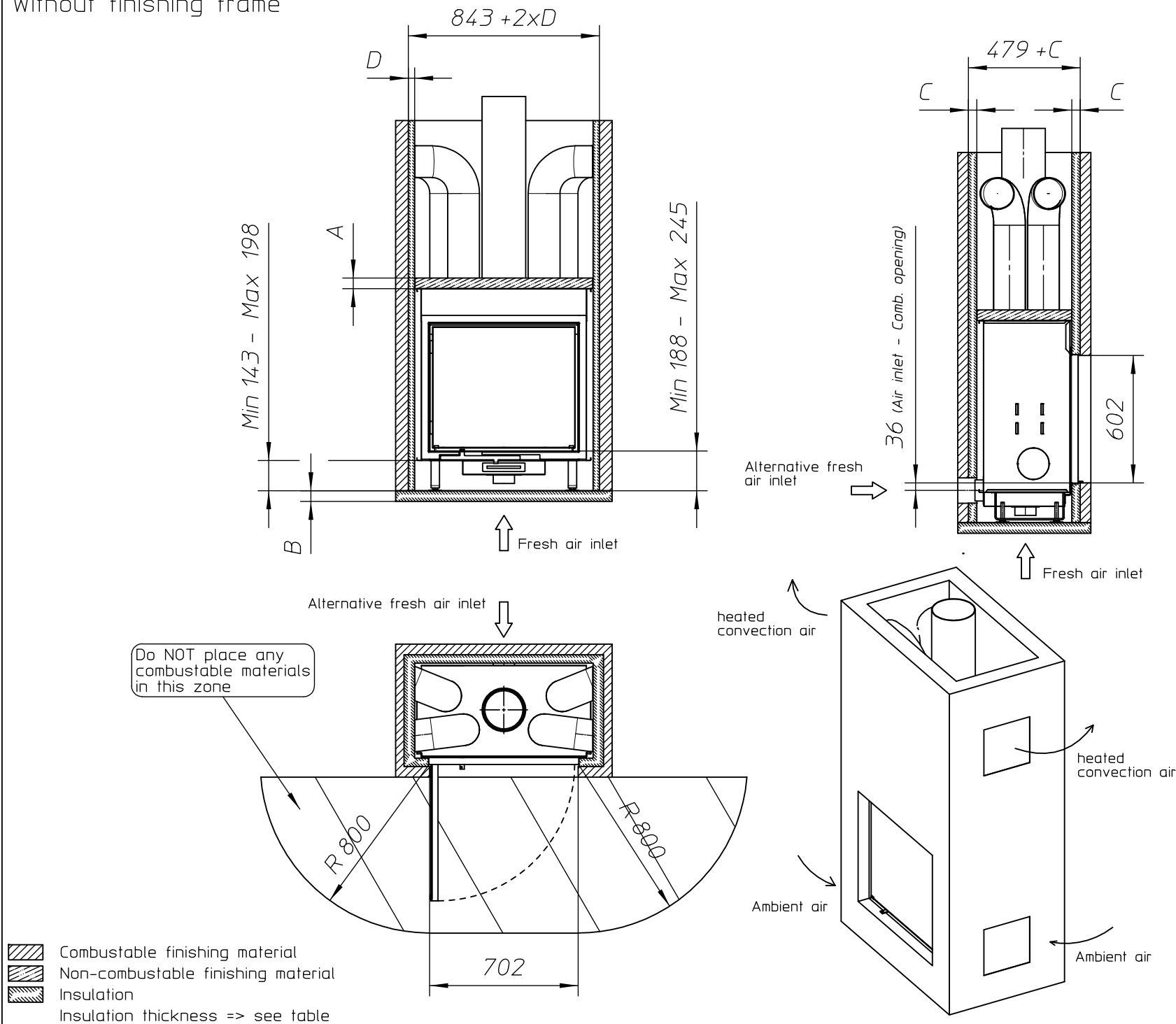
#### First aid and technical support:

- support@metalfire.eu
- +32 (0)9 261 50 57

scale 1:20	Rev. -1
www.metalfire.eu	EN 13229
General dimensional tolerances up to 6mm Metalfire preserves the right to modify specifications without previous notice	Sheet 1/3



Without finishing frame



# CITIZEN Patented

## metalfire

### Technical Document

Model: CITIZEN MF 700-60 WHE 1S

#### Dimensions (mm)

- combustion opening WxH: 702x602
- external WxDxH: 823x488x1098
- fresh air: 1xØ100
- diameter flue: Ø180

#### Technical Data

- capacity: 12.2kW
- efficiency capacity: 80%
- CO (volume with 13%O<sub>2</sub>): 0.09%
- dust (volume with 13%O<sub>2</sub>): 25mg/m<sup>3</sup>
- weight: 195kg
- air intake to convection : minimum 700cm<sup>2</sup> (4xØ150)
- air exhaust from convection : minimum 700cm<sup>2</sup> (4xØ150)

#### Specifications

- inside finishing: heat-resistant black paint
- vermiculite insulation plates
- convection jacket in galvanized steel
- side-hinged door with heat-resistant glass
- interior backside finishing: ORIGINAL (ribbed cast iron)
- standard door opens to the left side

#### Options

- promat insulation kit
- door opens to the right side

Table: prescribed insulation thickness (mm)

Combustable finishing material				
	A	B	C	D
Test report (TC = 0,14 W/mK)	NC	40	70	50
Metalfire recommended Promasil 1100L (TC = 0,081 W/mK)	NC	25	40	30
Non-combustable finishing material				
non-combustable materials (structural building items EXCLUDED e.g. load bearing walls)	0	0	0	0

#### First aid and technical support:

- support@metalfire.eu
- +32 (0)9 261 50 57

scale 1:25

www.metalfire.eu

EN 13229

General dimensional tolerances up to 6mm  
Metalfire preserves the right to modify specifications without previous notice

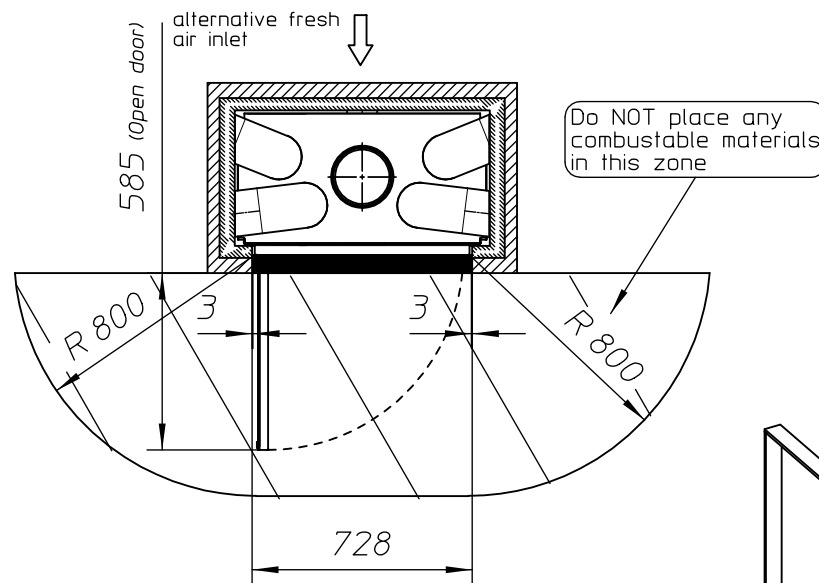
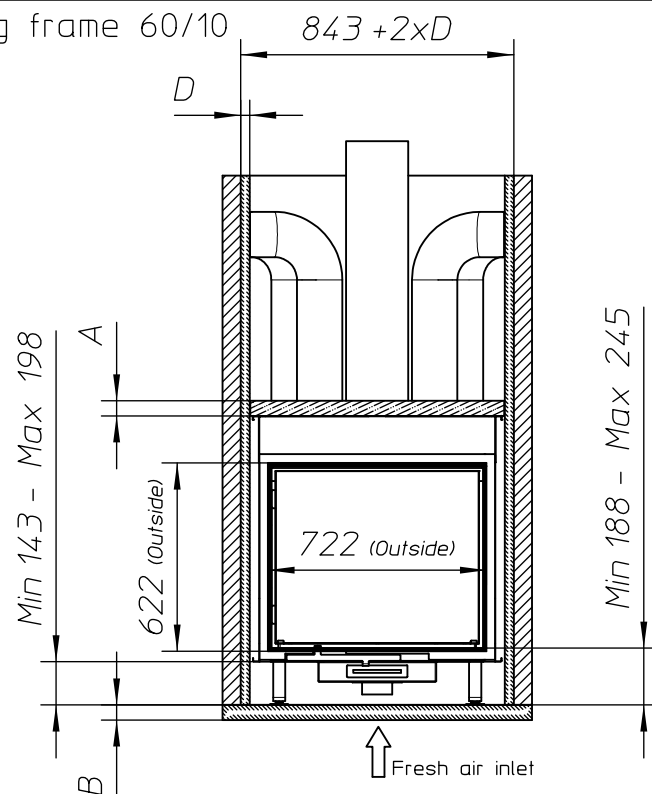
Rev.




-1

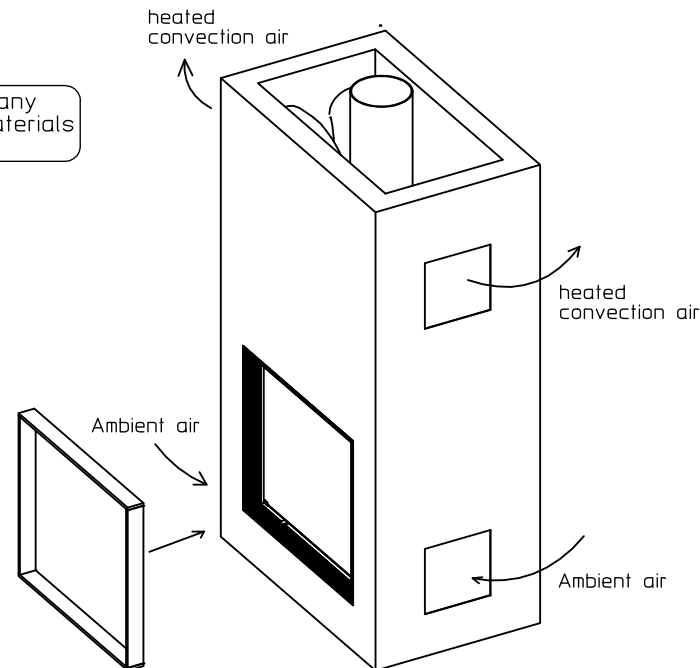
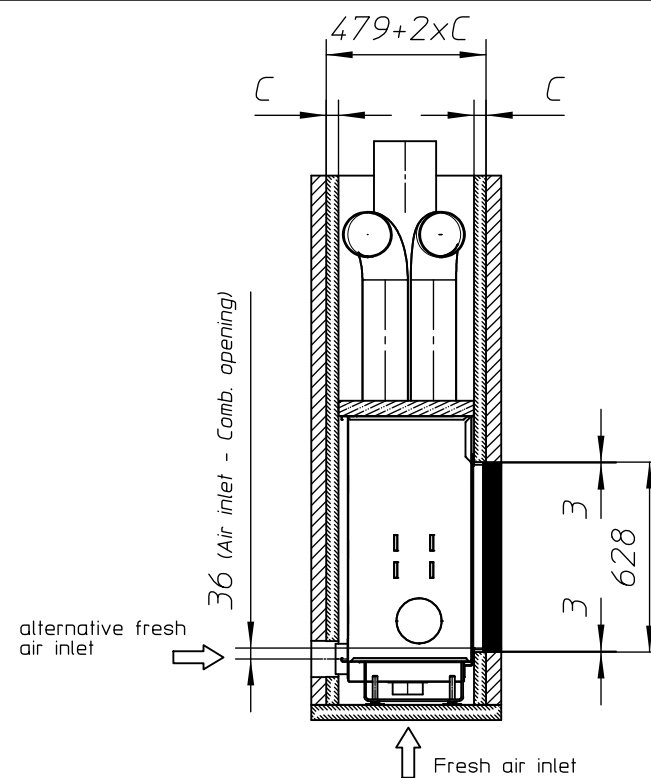
Sheet

2/3

With finishing frame 60/10



 Combustible finishing material  
 Non-combustible finishing material  
 Insulation  
 Insulation thickness => see table



CITIZEN Patented

metalfire

## Technical Document

Model: CITIZEN MF 700-60 WHE 1S

### Dimensions (mm)

- combustion opening WxH:	702x602
- external WxDxH:	823x488x1098
- fresh air:	1xØ100
- diameter flue:	Ø180

### Technical Data

- capacity:	12.2kW
- efficiency capacity:	80%
- CO (volume with 13%O <sub>2</sub> ):	0.09%
- dust (volume with 13%O <sub>2</sub> ):	25mg/m <sup>3</sup>
- weight:	195kg
- air intake to convection : minimum	700cm <sup>2</sup> (4xØ150)
- air exhaust from convection : minimum	700cm <sup>2</sup> (4xØ150)

### Specifications

- inside finishing: heat-resistant black paint
- vermiculite insulation plates
- convection jacket in galvanized steel
- side-hinged door with heat-resistant glass
- interior backside finishing: ORIGINAL (ribbed cast iron)
- standard door opens to the left side

### Options

- promat insulation kit
- door opens to the right side

Table: prescribed insulation thickness (mm)

Combustable finishing material				
	A	B	C	D
Test report (TC = 0,14 W/mK)	NC	40	70	50
Metalfire recommended Promasil 1100L (TC = 0,081 W/mK)	NC	25	40	30
Non-combustable finishing material				
non-combustable materials (structural building items EXCLUDED e.g. load bearing walls)	0	0	0	0
TC = thermal conductivity NC = non-combustable				

### First aid and technical support:

- support@metalfire.eu
- +32 (0)9 261 50 57

scale 1:20

www.metalfire.eu

EN 13229

General dimensional tolerances up to 6mm  
Metalfire preserves the right to modify specifications without previous notice

Rev.

-1

Sheet  
3/3